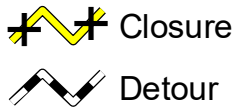


## **Forest Service Road 247 (Beaver Cr. Highway) Closed 7/8/25 – 9/30/25 for Road Maintenance**

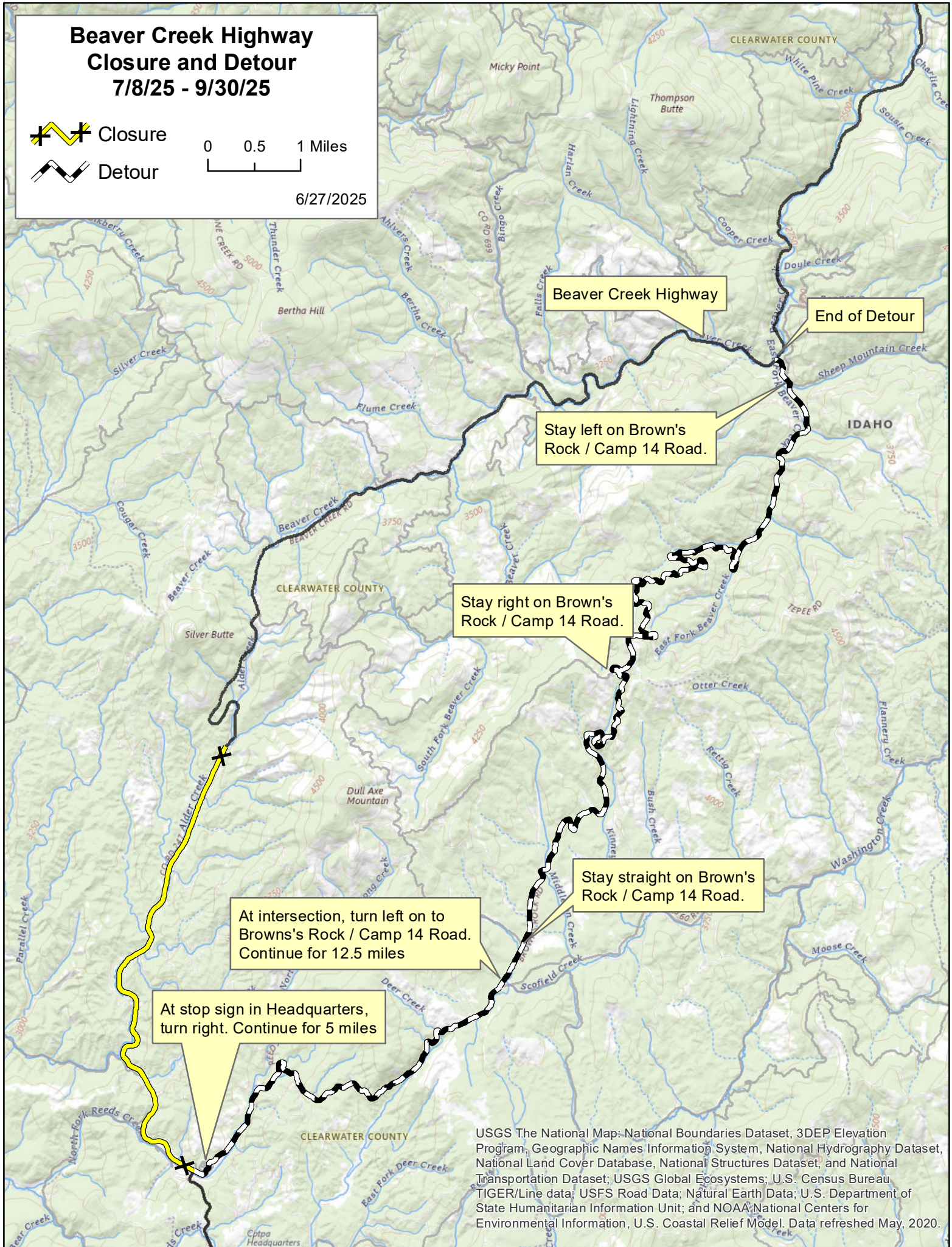
Forest Service Road 247 (Beaver Cr. Highway) will be closed and impassable from its junction with Highway 11 in Headquarters at mile post 0.00 to mile post 5.70 during a road maintenance project. This cooperative project between PotlatchDeltic and the U.S. Forest Service is scheduled to start 7/8/25 and run through approximately 9/30/25. Public access to areas beyond the closure will still be available via a detour over Scofield and Brown's Rock Roads. A map showing this detour route will be posted in Headquarters at the end of Highway 11. The detour route will be signed and posted.

# Beaver Creek Highway Closure and Detour 7/8/25 - 9/30/25



0 0.5 1 Miles

6/27/2025



USGS The National Map: National Boundaries Dataset, 3DEP Elevation Program, Geographic Names Information System, National Hydrography Dataset, National Land Cover Database, National Structures Dataset, and National Transportation Dataset; USGS Global Ecosystems; U.S. Census Bureau TIGER/Line data; USFS Road Data; Natural Earth Data; U.S. Department of State Humanitarian Information Unit; and NOAA National Centers for Environmental Information, U.S. Coastal Relief Model. Data refreshed May, 2020.